



Allan Valve



Allan Test-Block Valve and Integral Union Test-Block Valve

Positive-stop handle identifies selected operation and indicates direction of flow

Connections on center line easily installed — no pipe stress

No cavities to collect contaminants — self draining

Easy installation and removal

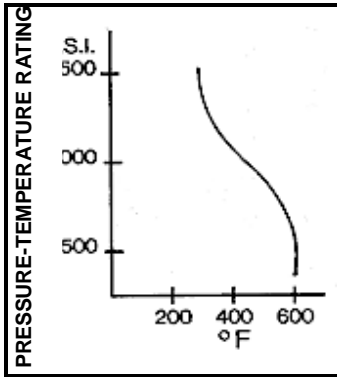
Stainless steel packing nut stops inter-port and steam leakage

High temperature design to 600 psi—500°F (41.0 bar-260°C)

Allan Valve offers Series STM Stainless Steel 3-Way Valves with or without integral spiral gasket union. Valve is available with integral union on inlet only or on both inlet and outlet.

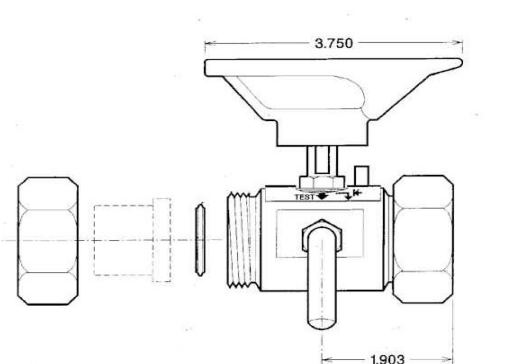
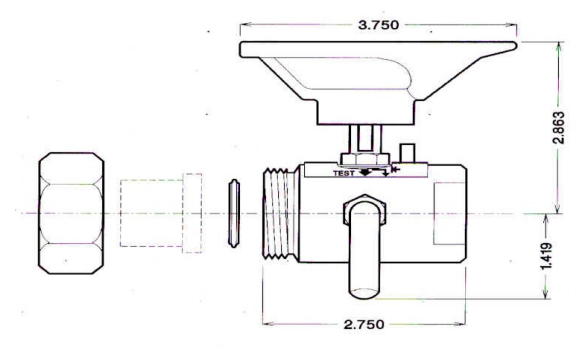
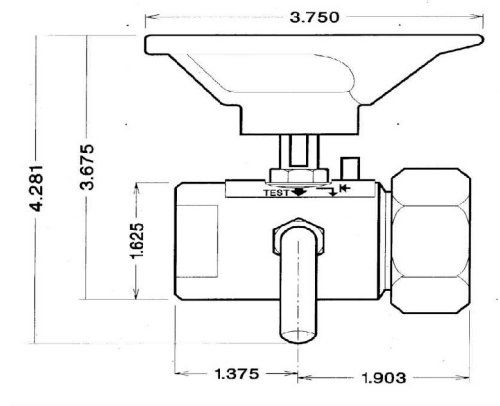
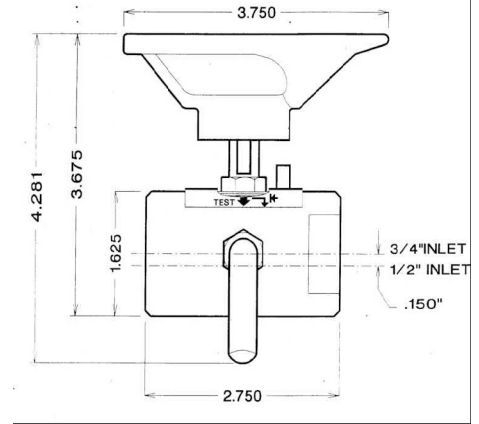
Union connections on Series STM Valves provide fewer screwed connections, less installation labor and reduced down time. Series STM comes complete with adjustable position test pigtail. Series STM is standard with oval arrow handle, positive stop-position indicator and 316 stainless steel internal parts.

Test steam traps accurately by the visual method using Series STM Valves. Series STM is a problem solving sampling system valve providing continuous flow sampling and eliminating multiple valves and fittings.



Specifications
 SEAL: Ryton* to 550° F
 PLUG AND STEM: 316 SS
 PACKING NUT: 303 SS
 BODY: Stainless Steel 303 SS
 HANDLE: PVC coated oval arrow design
 TEST CONNECTION: 1/8" NPT
 PORTING SIZE: 5/16" CV-1.24
 TEST PORT: 3/16" CV-0.40
 WEIGHT: 2 pounds
 *rtm -- Phillips Chemical Co

Your Local Representative



ALLAN Series STM Valve (No Unions)	
MODEL	PIPE CONNECTIONS
STM-4	outlet 1/2" female
	inlet 1/2" female
STM-6	outlet 3/4" female
	inlet 3/4" female

ALLAN Series STM Valve with Integral Unions		
MODEL	PIPE CONNECTIONS	Tailpiece Part No.
STM-1A	outlet 1/2" female	no union
	inlet 1/2" female union	FE4F
STM-1B	outlet 1/2" female	no union
	inlet 1/2" male union	FE4M
STM-1C	outlet 1/2" female	no union
	inlet 3/4" male union	FE6M
STM-1D	outlet 1/2" female	no union
	inlet 1/2" socket weld union	FE4SW
STM-1E	outlet 3/4" female	no union
	inlet 1/2" female union	FE4F
STM-1F	outlet 3/4" female	no union
	inlet 1/2" male union	FE4M
STM-1G	outlet 3/4" female	no union
	inlet 3/4" male union	FE6M
STM-1H	outlet 3/4" female	no union
	inlet 1/2" socket weld union	FE4SW
STM-2I	outlet 1/2" female union	FE4F
	inlet 1/2" female union	FE4F
STM-2J	outlet 1/2" male union	FE4M
	inlet 1/2" male union	FE4M
STM-2K	outlet 3/4" male union	FE6M
	inlet 3/4" male union	FE6M
STM-2L	outlet 1/2" socket weld union	FE4SW
	inlet 1/2" socket weld union	FE4SW
STM-2M	outlet 1/2" male union	FE4M
	inlet 1/2" female union	FE4F
STM-2N	outlet 1/2" male union	FE4M
	inlet 3/4" male union	FE6M

ALLAN VALVE George B. Allan and Company
 800-422-8727 www.georgeballan.com
 14836 Venture Dr. Farmers Branch, TX 75234